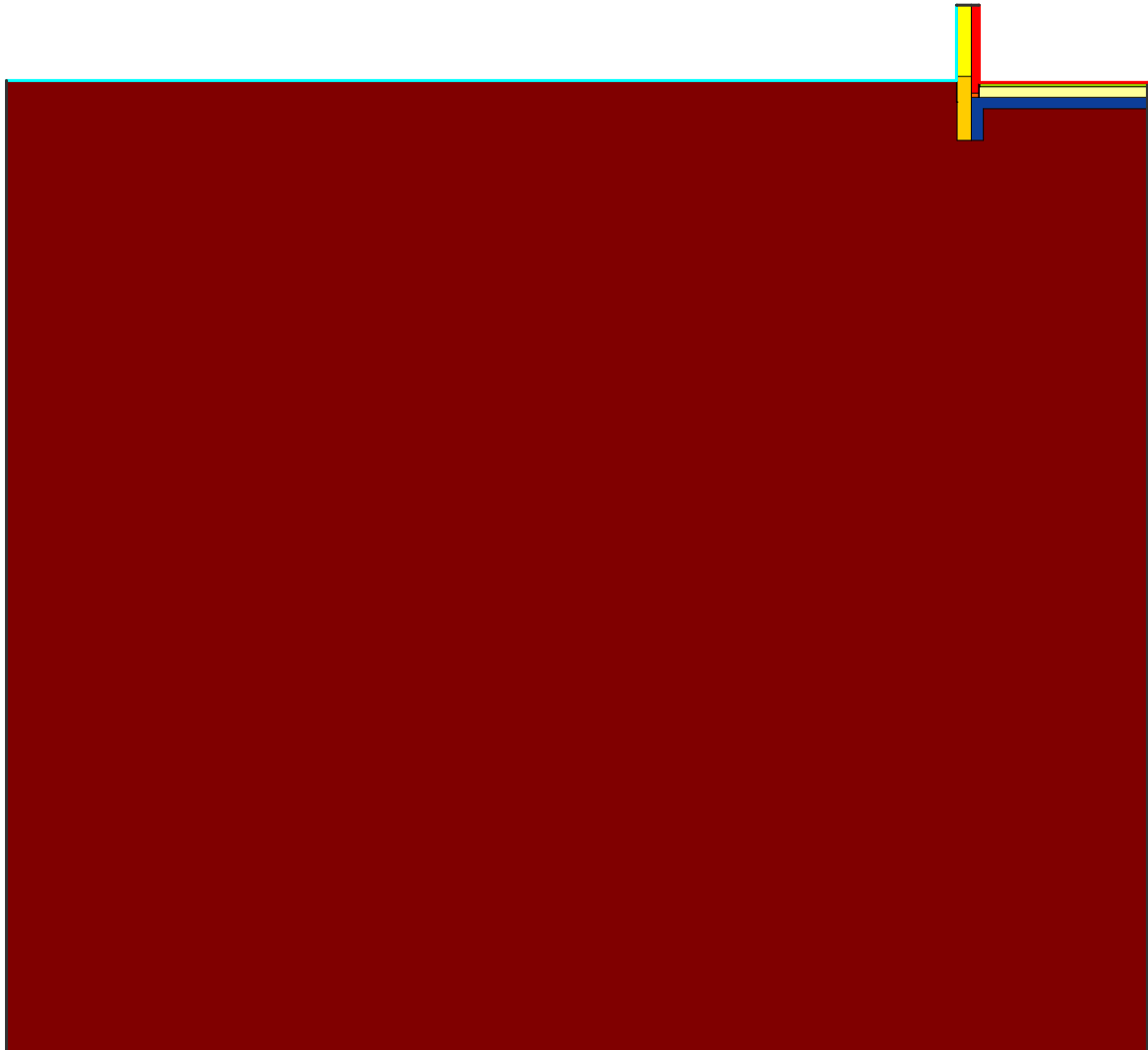


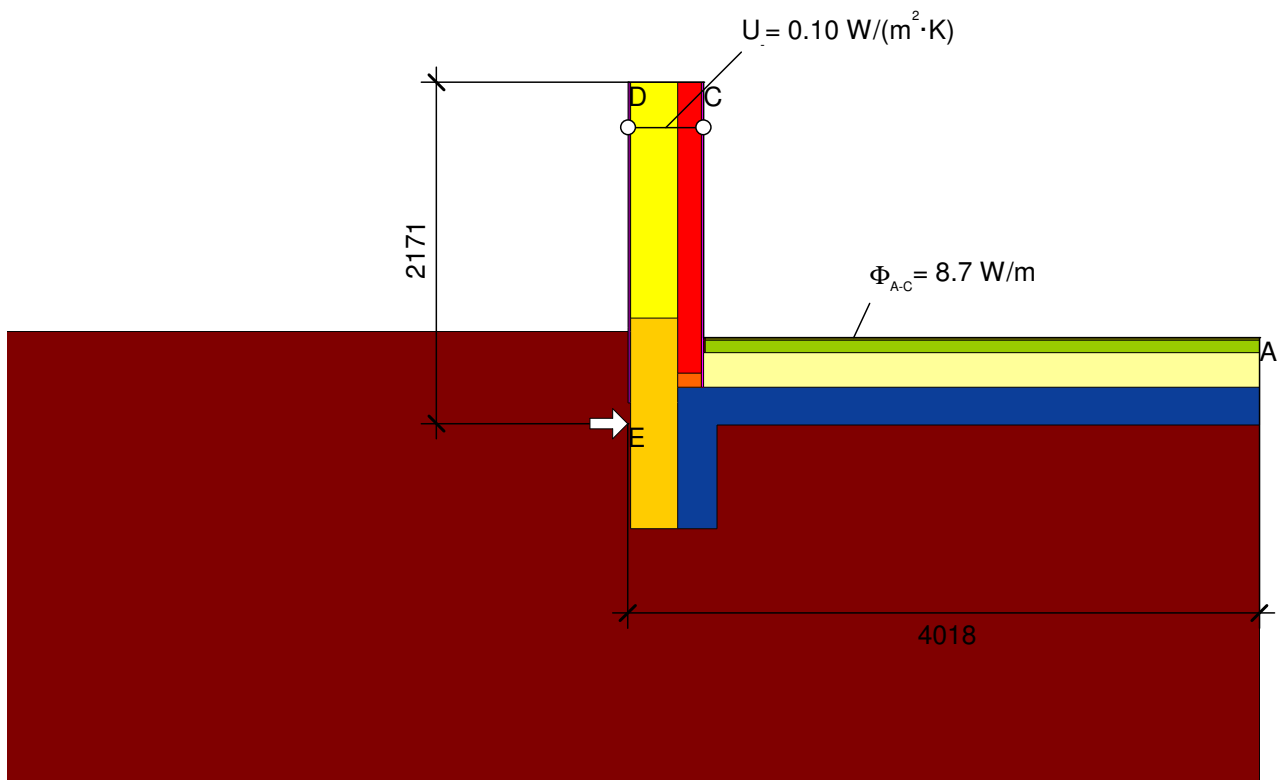
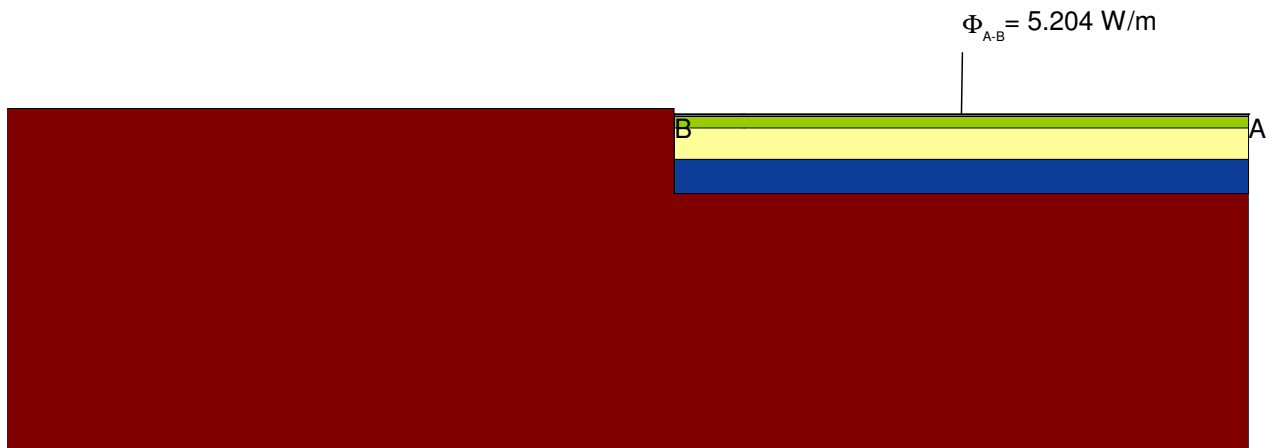
Eingaben



Name	λ [W/(m·K)]
Aussenputz	0.870
Beton armiert (mit 1% Stahl)	2.300
EPS Perimeterdämmung	0.033
Eiche	0.210
Gonon Super-Dämmplatte	0.021
Innenputz	0.700
Lambdapor	0.031
Modulbackstein Einstein	0.440
Perinsul SL	0.058
Sand und Kies	2.000
Stellstreifen	1.000
Zementestrich	1.400

Name	q[W/m ²]	θ [°C]	R[(m ² ·K)/W]
Heizperiodenmittel Aussen	3.600	0.040	
Innen Standard	20.000	0.130	
Symmetrie/Bauteilschnitt	0.000		

Psi-Wert Aussenabmessung



$$\psi_{A-E-C} = \frac{\Phi}{\Delta T} - \frac{\Phi_1}{\Delta T} - U \cdot b_2 = \frac{8.732}{16.400} - \frac{5.204}{16.400} - 0.098 \cdot 2.171 = 0.003 \text{ W}/(\text{m} \cdot \text{K})$$